



University of the Arctic:

Thematic Network on Social Work

Newsletter

No.1/2025

This fall, we're thrilled to host a four-part webinar series exploring key themes in Social Work in the Arctic.

Researchers from Thematic Network on Social Work will share insights on:

- **Social Work and Indigenous Peoples**
- **Social Work and Climate Change**
- **Urbanization and Rurality in the High North – Challenges to Social Work**

Webinars and discussions will be held in **English**, and we warmly welcome:

Bachelor's and Master's students in Social Work, Professionals in the field, and those who are interested in Arctic social issues.

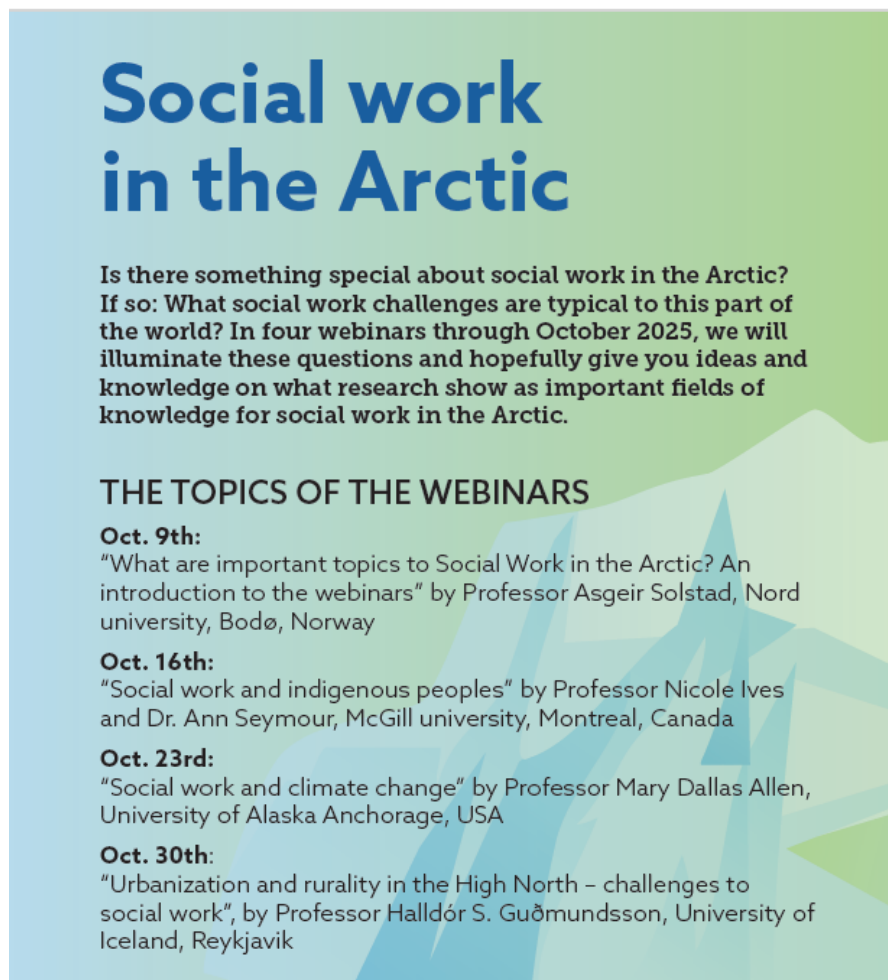
We especially hope to see participating students from across the Arctic region — including **Sweden, Canada, Finland, Norway, USA, Iceland, and Denmark!**

*Newsletter for "Thematic network in Social Work" within University of the Arctic.
Published Thematic Network Lead: Sandra Jervås, Nord university, Norway. Email:
sandra.r.jervas@nord.no*

Details

- **Start Date:** October 9
- **Time:** 18:00 (CET)
- **Duration:** 1 hour and 15 minutes per session
- **Language:** English
- **Platform:** Online (link provided upon registration)
- **Cost:** Free of charge!
- **Certificate:** Participants who attend all webinars will receive a diploma.

Contact person- and responsible: Asgeir Solstad. asgeir.solstad@nord.no

A poster with a light blue and green background featuring a stylized mountain range. The title 'Social work in the Arctic' is in large blue font. Below it, a paragraph asks if there is something special about social work in the Arctic and mentions four webinars in October 2025. The section 'THE TOPICS OF THE WEBINARS' lists four dates with topics and speakers: Oct. 9th (Introduction by Asgeir Solstad), Oct. 16th (Social work and indigenous peoples by Nicole Ives and Dr. Ann Seymour), Oct. 23rd (Social work and climate change by Mary Dallas Allen), and Oct. 30th (Urbanization and rurality by Halldór S. Guðmundsson).

Social work in the Arctic

Is there something special about social work in the Arctic?
If so: What social work challenges are typical to this part of the world? In four webinars through October 2025, we will illuminate these questions and hopefully give you ideas and knowledge on what research show as important fields of knowledge for social work in the Arctic.

THE TOPICS OF THE WEBINARS

Oct. 9th:
"What are important topics to Social Work in the Arctic? An introduction to the webinars" by Professor Asgeir Solstad, Nord university, Bodø, Norway

Oct. 16th:
"Social work and indigenous peoples" by Professor Nicole Ives and Dr. Ann Seymour, McGill university, Montreal, Canada

Oct. 23rd:
"Social work and climate change" by Professor Mary Dallas Allen, University of Alaska Anchorage, USA

Oct. 30th:
"Urbanization and rurality in the High North – challenges to social work", by Professor Halldór S. Guðmundsson, University of Iceland, Reykjavik



*Newsletter for "Thematic network in Social Work" within University of the Arctic.
Published Thematic Network Lead: Sandra Jervås, Nord university, Norway. Email:
sandra.r.jervas@nord.no*

WEBINARS

PRACTICAL INFORMATION

This is a series of four webinars on four Thursdays in October, starting with October 9th and ending with a webinar on Oct 30th. Each webinar lasts for one hour and fifteen minutes. All webinars will start at 18.00 GMT+2, which is Norwegian time. Check what time this is where you live to find when it starts in your homeplace. The webinars are open to everybody who cares for social work on the "top of the world". You can join as many webinars as you want to. Those who join all four webinars can get a diploma, conforming their participation. The webinars are FREE!

REGISTRATION

You don't have to pay anything to join the webinars. But you have to register on „Nettskjema“, using this link:

<https://nettskjema.no/a/536707>.



In a week or two before the first webinar on Oct 9th, you will receive a link on your e-mail to use to join all the webinars.

Hope to see you in October!



We are proud to announce that UA Thematic Network on Social Work will be facilitating a workshop at the IFSW European Social Work Conference 2025 in October.

TOPIC: “EMBRACING INDIGENOUS KNOWLEDGE IN SOCIAL WORK EDUCATION “

- Tuesday, October 7, 2025
- 3:20 PM - 4:20 PM
- At Forum/Mjølner

Target audience: Social work educators, social work students, researchers, Post-docs/PhDs, social workers, others with interest in partnering with Indigenous colleagues in their regions.

This interactive workshop invites students, educators, professionals, and researchers to discuss incorporating Indigenous perspectives into social work programs. It focuses on evolving social work education to foster inclusive learning environments. Participants will share stories about innovative locally grounded practices that go beyond traditional, Western-developed curricula, emphasizing respect for Indigenous knowledge, wholistic learning, and diverse perspectives. Discussion challenges Western-focused accreditation standards.

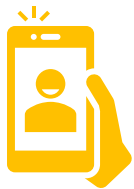
In this activity-focused workshop, UArctic Social Work Thematic Network members will facilitate participants in small groups. Each group will center their discussion on questions related to challenges and opportunities in embracing Indigenous ways of knowing, doing and being. An interactive dialogue can foster these practices across universities with the objective of contributing to healing, inclusivity, and wholistic approaches to teaching and strengthening respectful relationship building. The aim is to

*Newsletter for “Thematic network in Social Work” within University of the Arctic.
Published Thematic Network Lead: Sandra Jervås, Nord university, Norway. Email: sandra.r.jervas@nord.no*

dismantle positivistic paradigms by embracing other ways of knowing with the goal of seeking reconciliation.

Aligned with multiple SDGs, this workshop supports quality education, reduced inequalities, and strong institutions by integrating Indigenous perspectives and promoting social inclusion.

Learning outcomes: Participants will (1) Critically reflect on how integrating Indigenous Knowledges supports social work curriculum's alignment with SDGs, (2) Increased knowledge and awareness regarding strategies for informing effective social work practice and (3) Centering Indigenous knowledge to transform social work education, advance reconciliation, and create a more wholistic framework for social work practice.



For further details about the IFSW conference and program, please visit the webpage: [Bridging Communities: Building Sustainable Futures - IFSW 2025](#)



*Newsletter for “Thematic network in Social Work” within University of the Arctic.
Published Thematic Network Lead: Sandra Jervås, Nord university, Norway. Email: sandra.r.jervas@nord.no*