

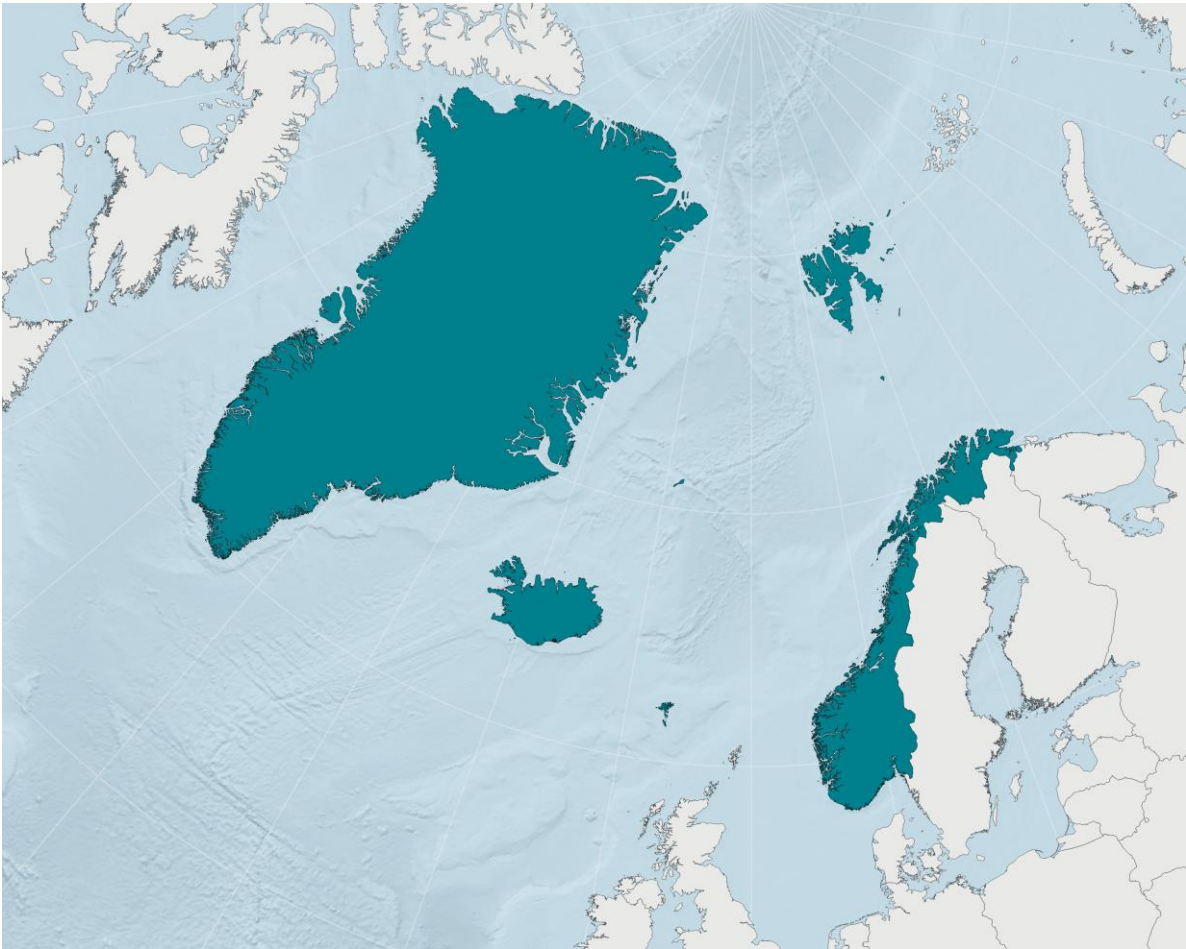


Working Group on Enhancing User Involvement in decision making in NAMMCO

Learning to use and combine diverse knowledge systems to improve marine mammal management

Naima El bani Altuna (she/her)
Deputy Secretary at NAMMCO
naima@nammco.org

Give evidence-based advice for marine mammal **conservation and management**



Recognition of the **rights, needs** and **duties** of coastal communities

Sustainability – Responsibility – Transparency

“Management decisions should be based on the best available science, which may include hunter and user data and observations.”

Principle 5 of the Precautionary Approach adopted by the NAMMCO 30th Council (2023)

Committees at NAMMCO from which advice generates



Committee on
Hunting Methods



Scientific Committee



Council



**Management
Committees**

Advice-generating process in NAMMCO

**Request
for advice**



**Knowledge
synthesis**



**Committee
review**



**Advice to
members**



Accept/Formulate a
request

Council



Advice-generating process in NAMMCO

**Request
for advice**

**Knowledge
synthesis**

**Committee
review**

**Advice to
members**



Accept/Formulate a
request

Council



Assemble best available
data and produce report



Advice-generating process in NAMMCO

**Request
for advice**

**Knowledge
synthesis**

**Committee
review**

**Advice to
members**



Accept/Formulate a
request

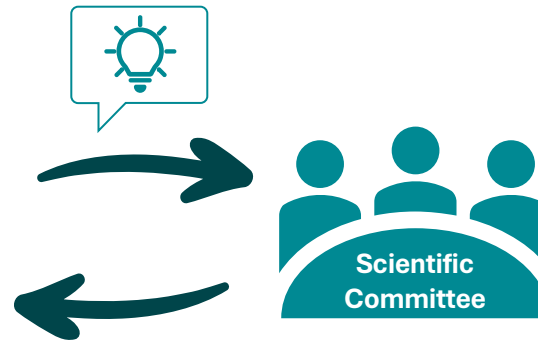
Council



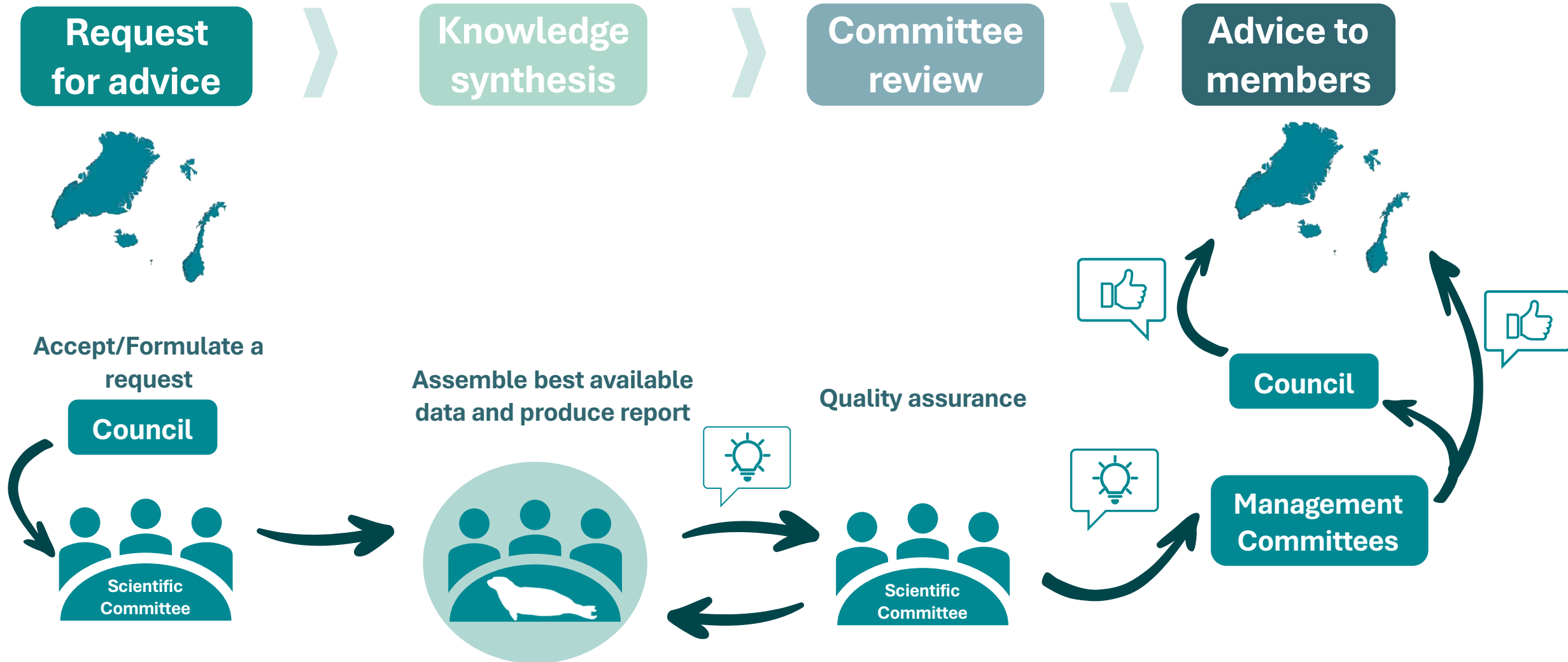
Assemble best available
data and produce report



Quality assurance



Advice-generating process in NAMMCO



Advice-generating process in NAMMCO

Request
for advice

Knowledge
synthesis

Committee
review

Advice to
members



Accept/Formulate a
request

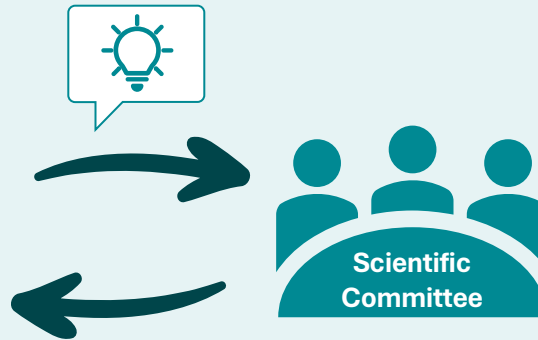
Council



Assemble best available
data and produce report



Quality assurance



Council

Management
Committees



NAMMCO



(Current) stakeholder involvement within NAMMCO



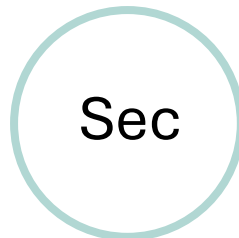
Hunters



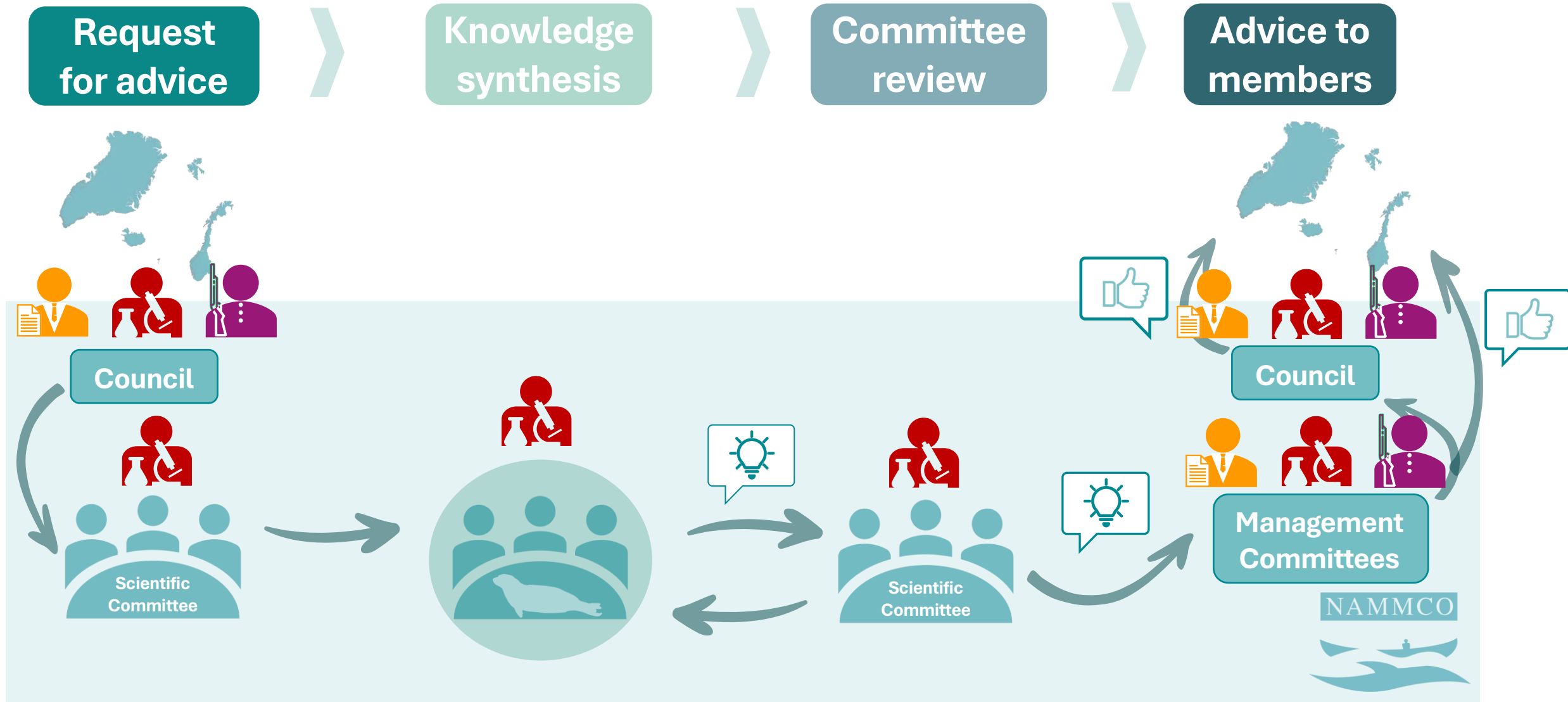
Managers



Natural scientists



NAMMCO Secretariat





Recognition of lack of and willing to increase user involvement in NAMMCO

1992

Discussed in
Council

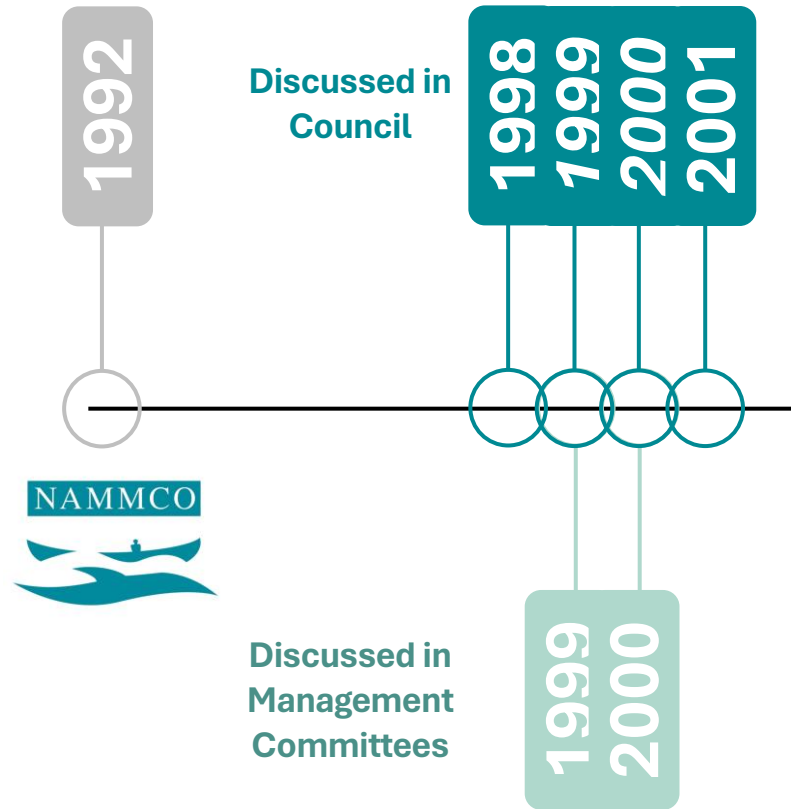
1998



Discussed in
Management
Committees

Mention in the Council but no decision made

Recognition of lack of and willing to increase user involvement in NAMMCO

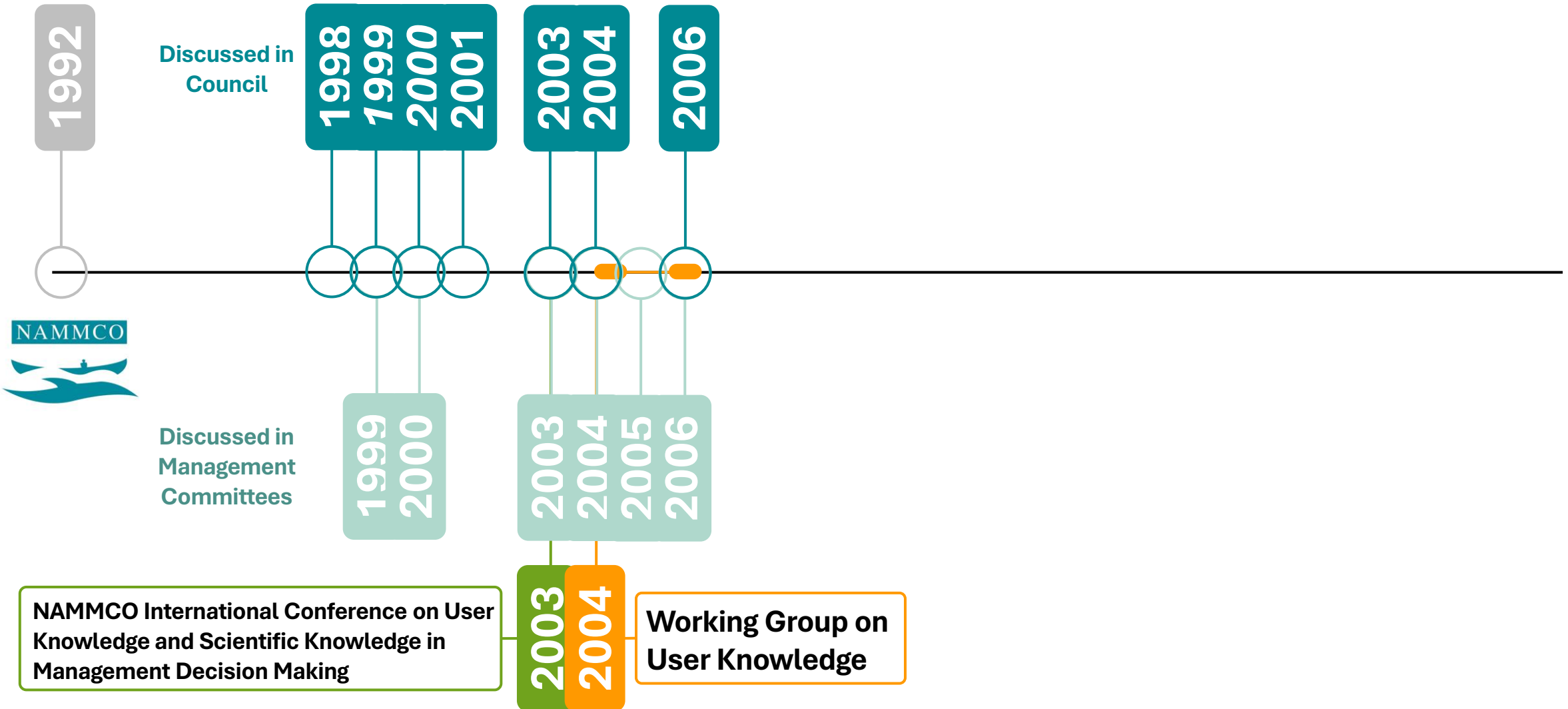


“Minke whale stock status report” a pilot project to integrate scientific and hunters’ knowledge (1999)



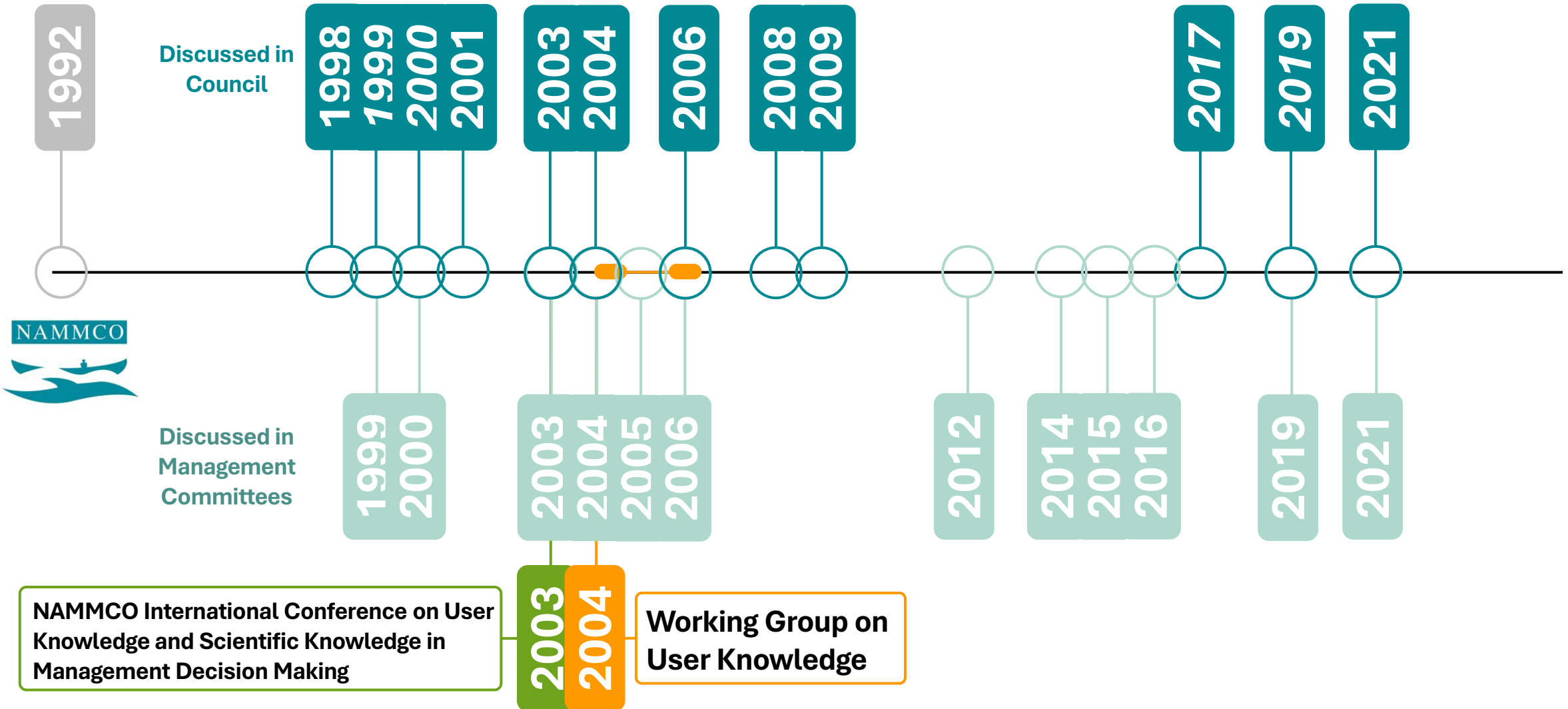
© K. A. Fagerheim

Recognition of lack of and willing to increase user involvement in NAMMCO



Mention in the Council but no decision made

Recognition of lack of and willing to increase user involvement in NAMMCO



Mention in the Council but no decision made

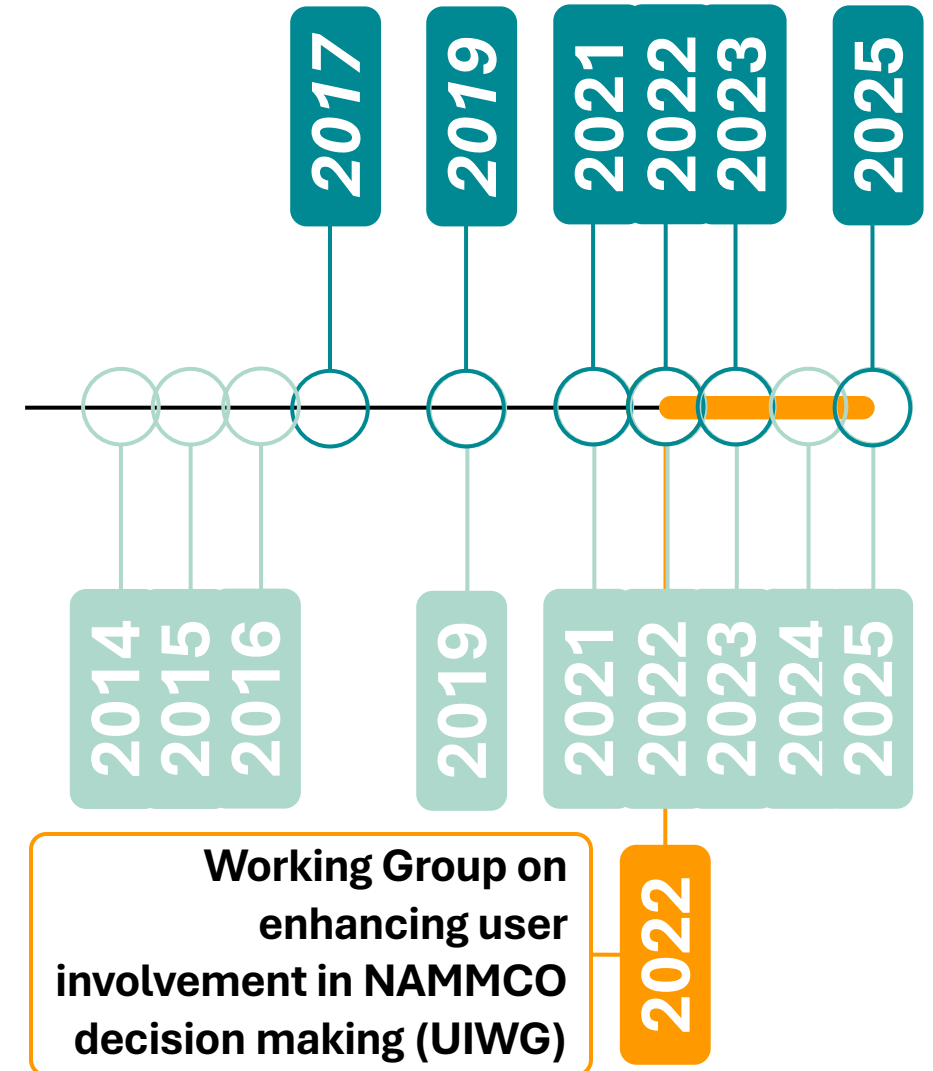
Harbour porpoise by-catch in gillnets and the use of pingers



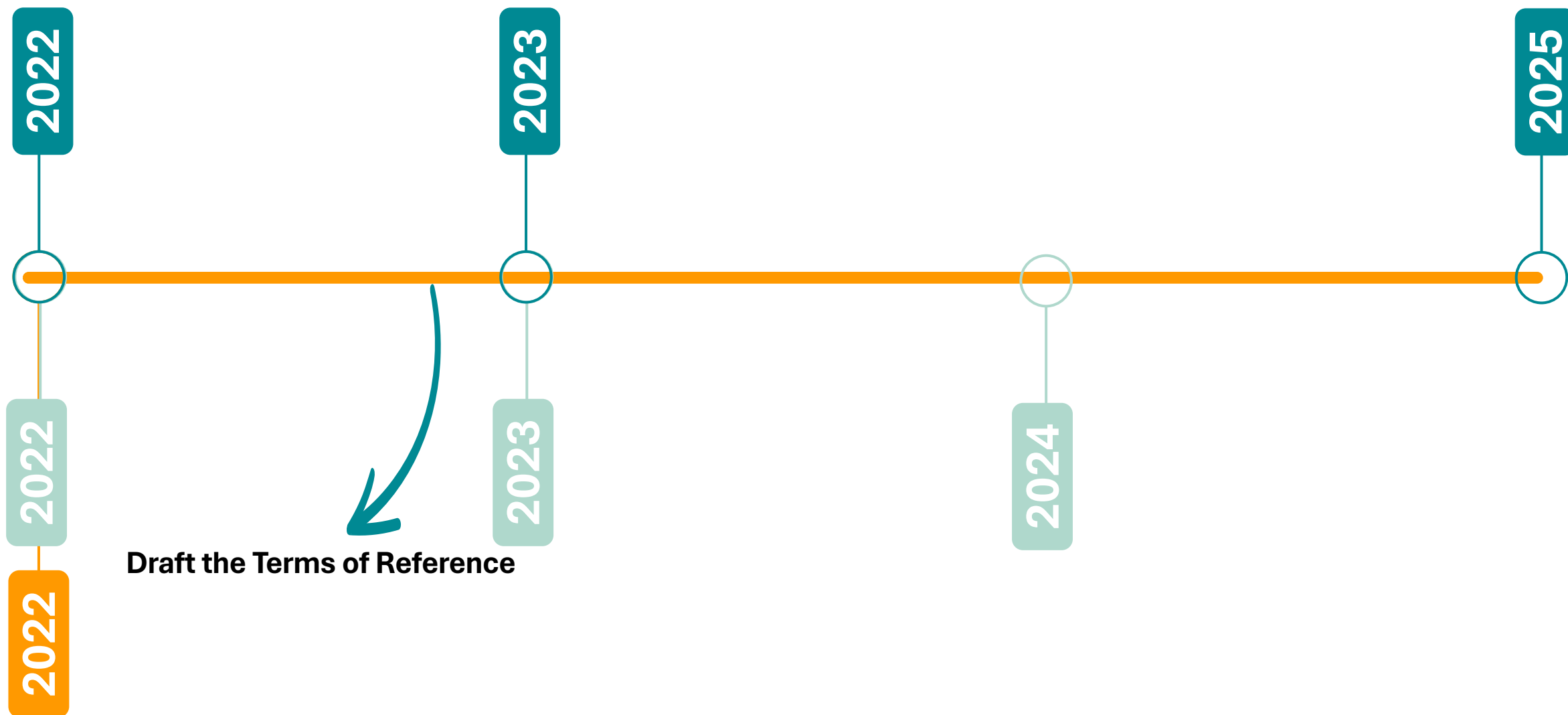
© IMR – Institute of Marine Research



© Fisktek



Working Group on enhancing user involvement in NAMMCO decision making (UIWG)



Terms of Reference

The Working Group on enhancing user involvement in NAMMCO decision making (UIWG) shall consider and give advice on how to best initiate, improve and strengthen users' involvement in NAMMCO to produce better decisions and strengthen the legitimacy of decisions. This will involve finding best practices on how to co-produce knowledge by stakeholders (users, scientists, managers) to obtain the best ecosystem-based management of marine mammals and their use by the societies that utilise them.

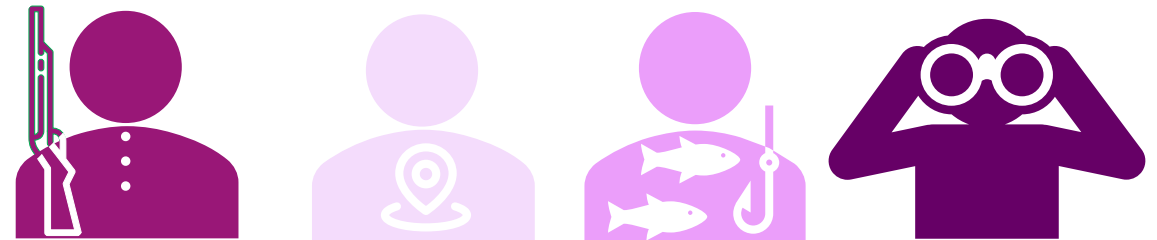
Members



Managers



Scientists



Users

Challenge 1

All stakeholders should be represented, but currently UIWG does not include members with expertise in such processes



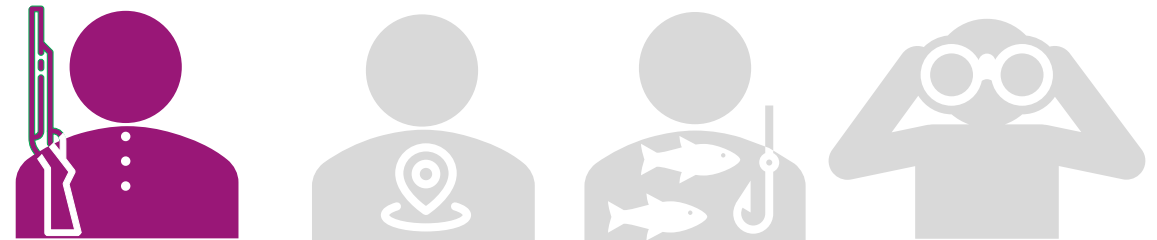
Members



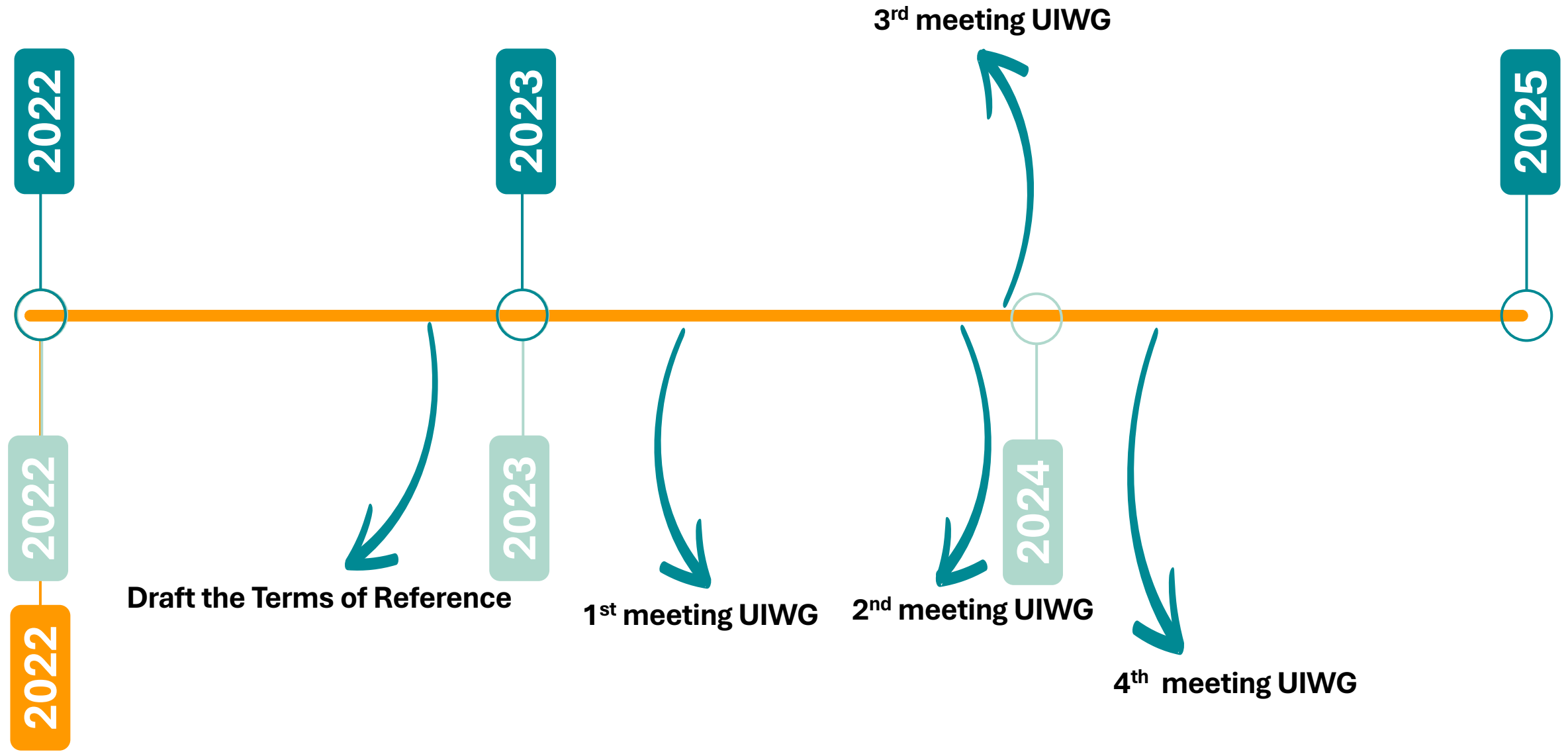
Managers



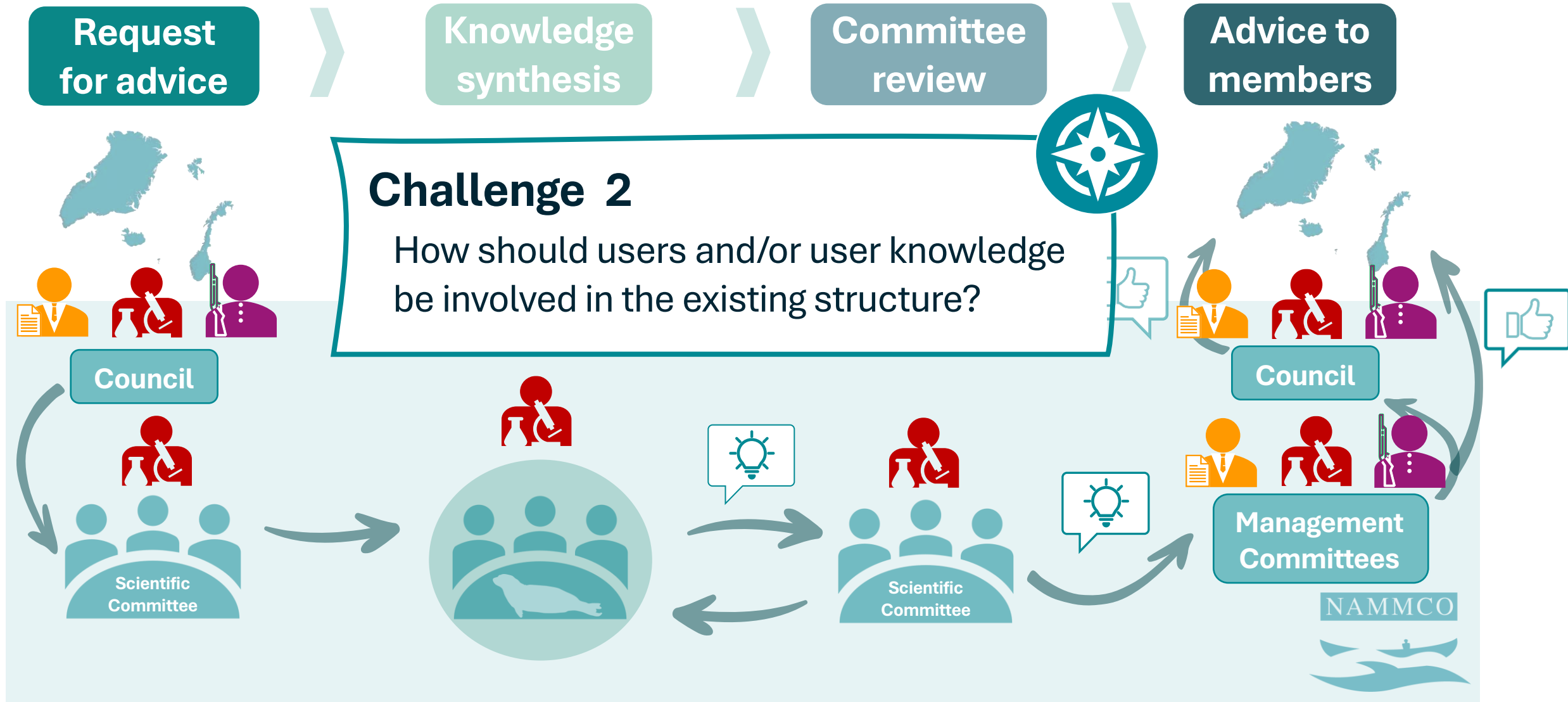
Scientists



Users



(Current) stakeholder involvement within NAMMCO



Advice-generating process in NAMMCO



Advice-generating process in NAMMCO



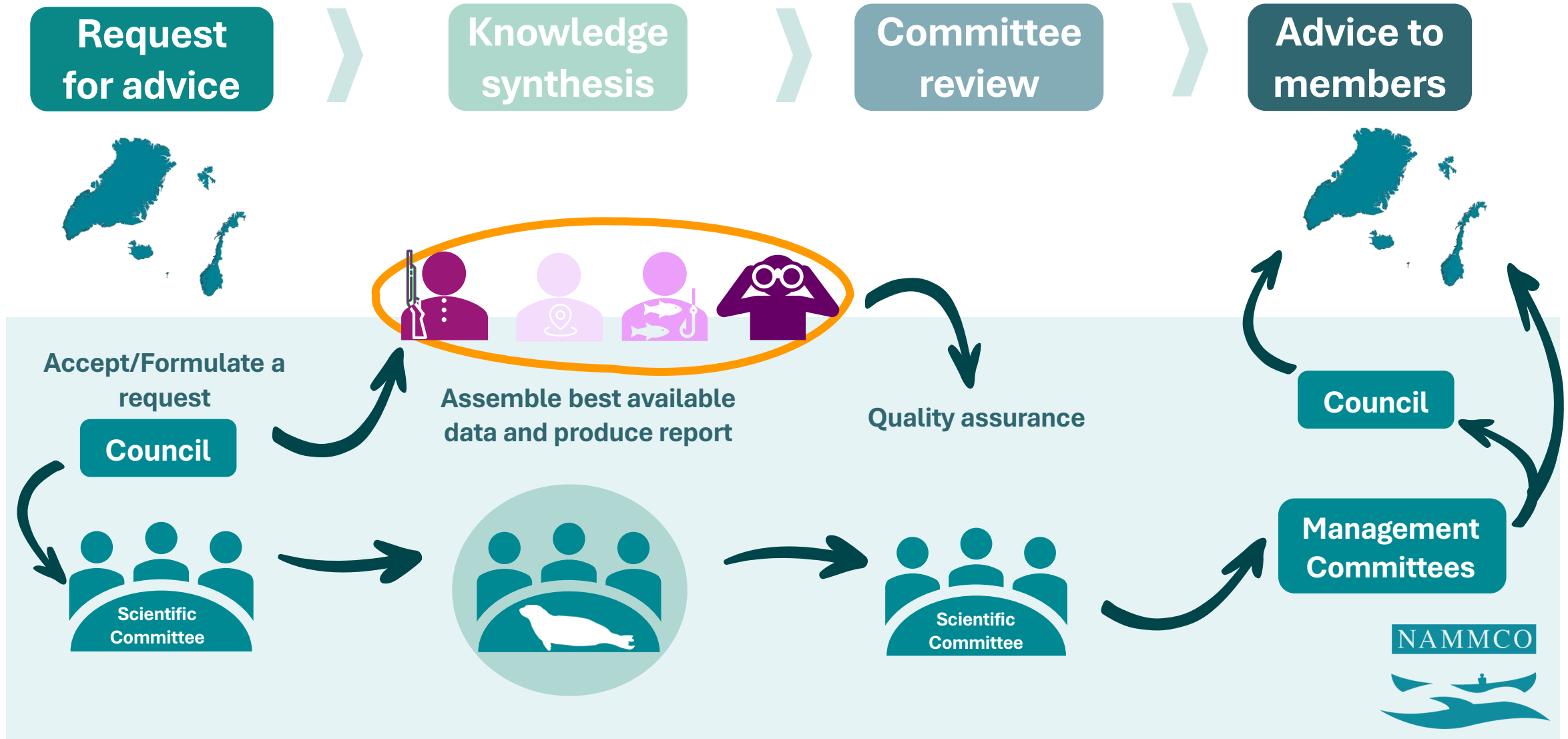
Advice-generating process in NAMMCO



Advice-generating process in NAMMCO



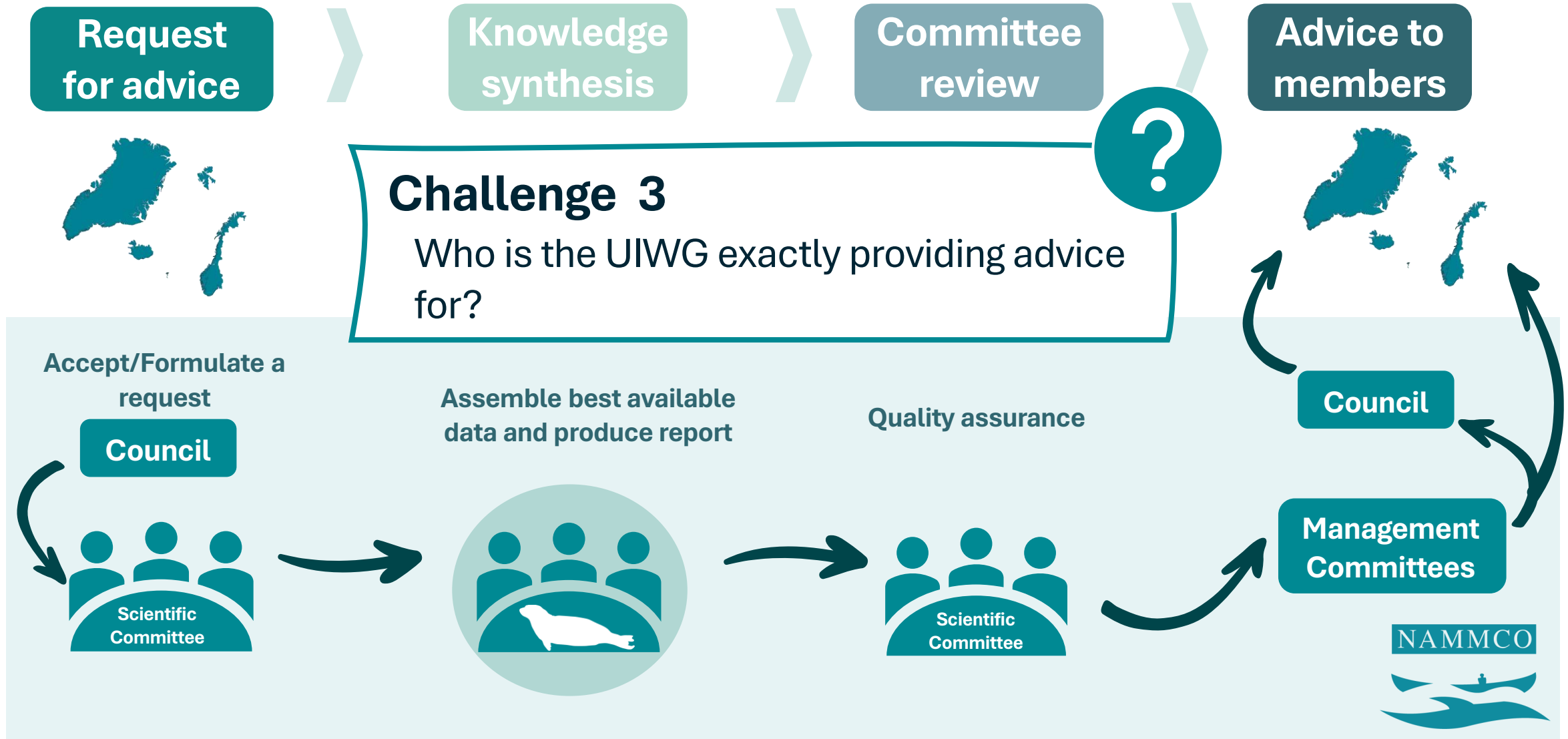
Advice-generating process in NAMMCO



Advice-generating process in NAMMCO



Advice-generating process in NAMMCO



Challenge 1

All stakeholders should be represented, but currently UIWG does not include members with expertise in such processes



Challenge 2

How should users and/or user knowledge be integrated in the existing structure?



Challenge 3

Who is the UIWG exactly providing advice to?



Based on previous discussions... Some lessons learned

1

Highlighting the missing voices: Naming who is missing is critical—hence the importance of emphasising the word *user* and not *stakeholder* in the group's name.

2

Where to start... Take a case study and identify where agreements and disagreements lie without compromising anyone's views. The UIWG/NAMMCO Council would then decide how to address these differences .

3

Representation from beginning to end: Formal user involvement in both scientific projects and management decision-making processes should start at the project design stage and continue throughout the process.

4

No One-Solution-Fits-All: User involvement should be species-specific and, if necessary, country-specific to ensure advice is tailored to the local context of the management problem.

5

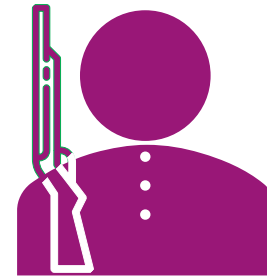
The foundation: trust, respect, time, patience and commitment to the process

CHM a successful example of user involvement at NAMMCO?



Committee on
Hunting Methods

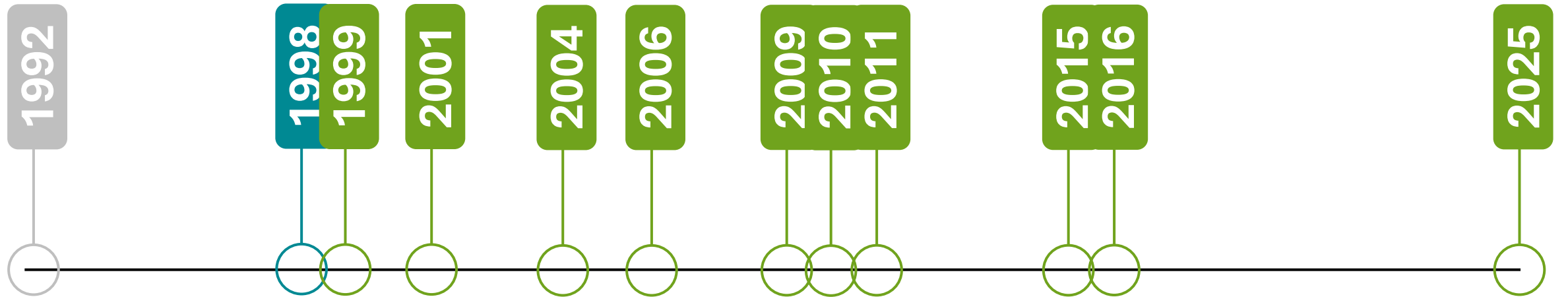
Members



Terms of Reference

- provide advice on hunting methods for those species of marine mammals relevant to NAMMCO member countries.
- ensure that such advice is based on the best available scientific findings, technological developments and traditional knowledge, with due consideration given to safety requirements, animal welfare, efficiency in hunting gears and efficiency of utilisation.

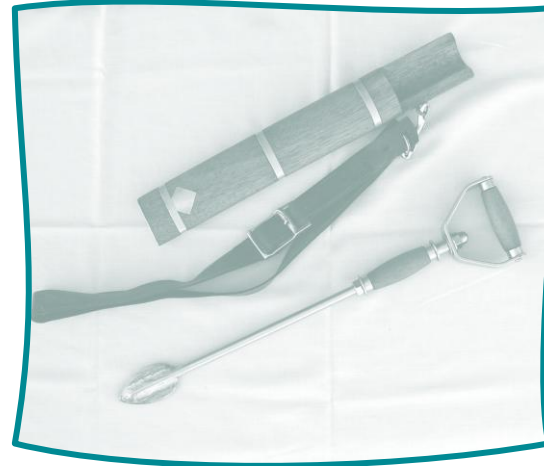
CHM a successful example of user involvement at NAMMCO?



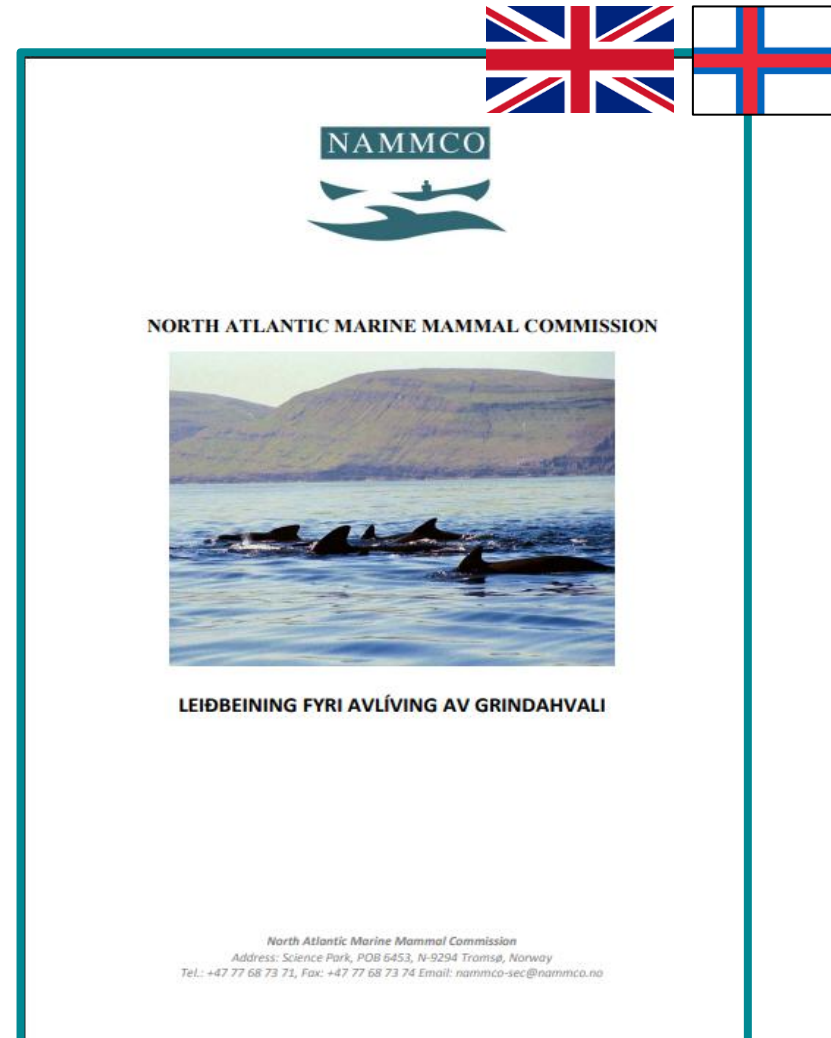
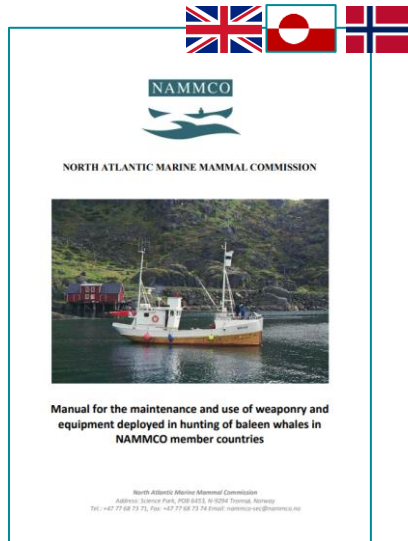
Terms of Reference

- provide advice on hunting methods for those species of marine mammals relevant to NAMMCO member countries.
- ensure that such advice is based on the best available scientific findings, technological developments and traditional knowledge, with due consideration given to safety requirements, animal welfare, efficiency in hunting gears and efficiency of utilisation.

CHM a successful example of user involvement at NAMMCO?



CHM a successful example of user involvement at NAMMCO?



- **Complex process:**
 - Sometimes it works (e.g., CHM).
 - Other times, the road is more challenging (e.g., UIWG/Scientific process).
 - Could this be influenced by the “culture” of the fields?

- **Commitment is key:** it takes **time, patience, trust, respect** to achieve meaningful results!

- It is a complex process, but the benefits are immense for all parties involved.

Some final thoughts

