

Nunavut Wildlife Management Board



KNOWLEDGE CO-PRODUCTION THROUGH THE NUNAVUT WILDLIFE MANAGEMENT SYSTEM

by Denis Etiendem Ndeloh, PhD.



Table of Contents

- **Introduction to the Nunavut Wildlife Management Board**
 - NWMB mandate, structure, and decision-making process
- **Knowledge co-production through the Boards programs, policies and processes**
 - Participation in wildlife research
 - Inuit engagement
 - Community-based monitoring
- **Challenges and limitations**





Introduction to the Nunavut Wildlife Management Board

About the NWMB

The NWMB was created in 1994 after the signing of the Nunavut Agreement (NA) which established Nunavut as a territory in 1999. The Board's mandate is to manage wildlife in Nunavut by combining Inuit Qaujimajatuqangit with modern science.

The NWMB has several duties assigned to it through the Nunavut Agreement under Article 5 including mandatory functions (outlined in Section 5.2.33), discretionary functions (outlined in Section 5.2.34), and research functions (outlined in Sections 5.2.37 and 5.2.38).

Nunavut covers one-fifth of Canada – over 2 million km². This vast territory stretches across a diverse landscape, encompassing three main geographical regions: the Arctic Archipelago, the mainland, and the Arctic Coastal Plain.

The NWMB performs the following primary functions:

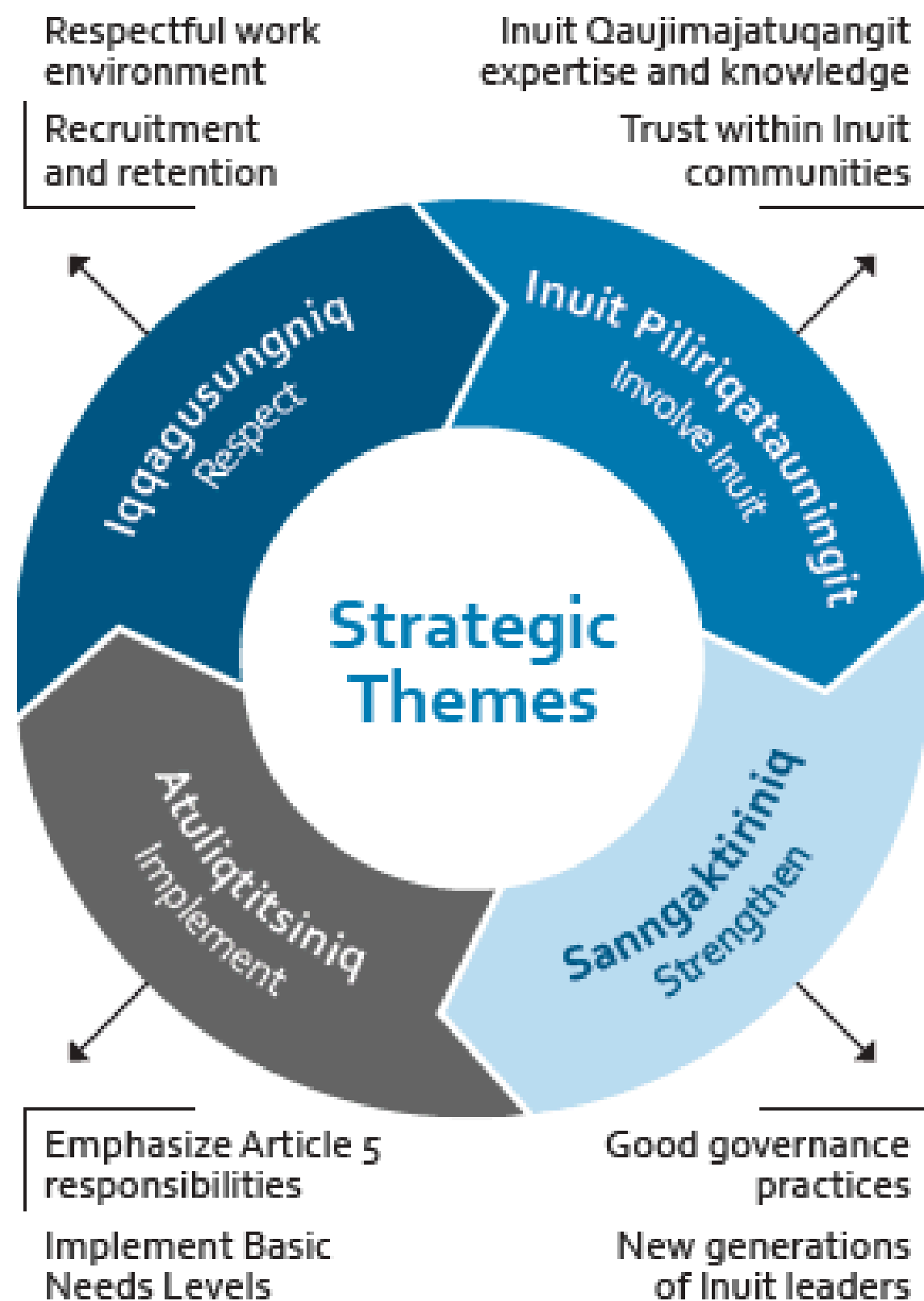
- Participating in or facilitating wildlife research
- Conducting a wildlife harvest study from time to time
- Rebutting presumptions as to need
- Establishing, modifying, or removing levels of total allowable harvest
- Establishing and/or adjusting the basic needs level
- Allocating resources from the surplus to other residents and to existing operations
- Making recommendations as to allocation of the remaining surplus
- Establishing, modifying or removing non-quota limitations and
- Any other function required by the Nunavut Agreement and not specifically referred to above.

Board Member Appointments

The NWMB Board is made up of nine (9) members appointed for a period of four (4) years. The Governor in Council appoints the NWMB Chairperson based on nominations from the NWMB. Board members are appointed by:

- Governor in Council based on the advice of the Minister responsible for fish and marine mammals (i.e., Fisheries and Oceans Canada)
- Governor in Council based on the advice of the Minister responsible for the Canadian Wildlife Service (i.e., Environment and Climate Change Canada)
- Governor in Council based on the advice of the Minister of Crown-Indigenous Relations and Northern Affairs Canada in consultation with the Commissioner-in-Executive Council
- Commissioner-in-Executive Council (i.e., Government of Nunavut)
- Nunavut Tunngavik Incorporated
- Kivalliq Inuit Association
- Qikiqtani Inuit Association
- Kitikmeot Inuit Association





This page shows an overview of our plan. You can learn more about each part on the next pages.

Mission

Managing wildlife, guided by conservation principles, honouring the key role of Inuit in harvesting, for the well-being of current and future generations in Nunavut.

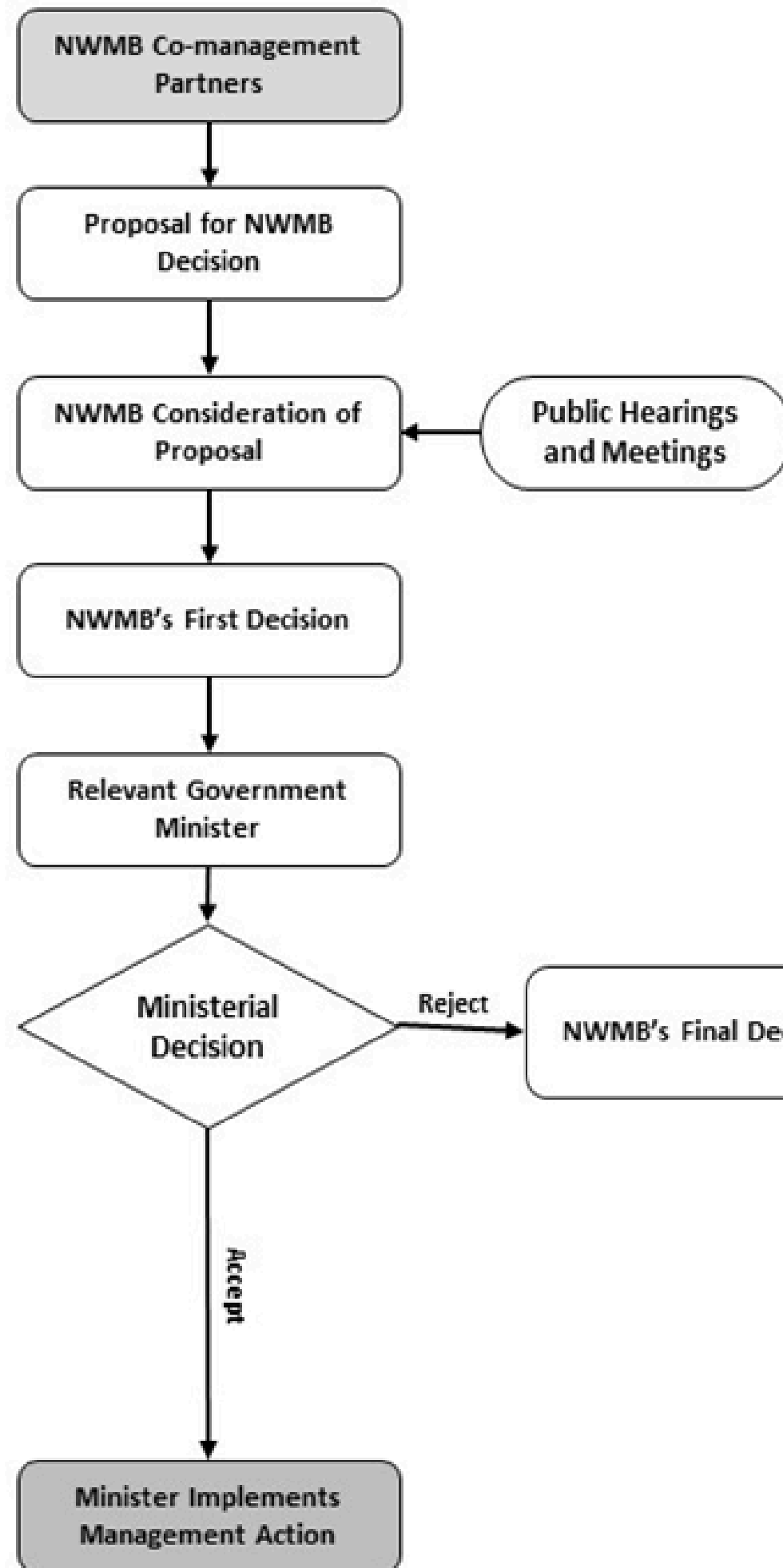
Vision

Cooperative wildlife management through Inuit leadership.

Guiding Principles

- Working together
- Making informed decisions
- Remaining open and transparent
- Being dedicated





NWMB decision-making process

The NWMB Co-Management decision-making process is outlined in Section 5.3 of the Nunavut Agreement. Grounds for judicial review of NWMB decisions are set out in Section 5.3.1 of the Nunavut Agreement.

Knowledge co-production through the Boards programs, policies and processes





Participation in wildlife research

Research Trust

Funding for government
wildlife research

IQ Reserch Fund

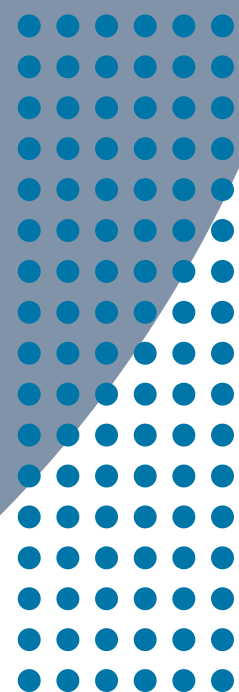
Funding for documenting
Inuit knowledge

Wildlife Studies Fund

Funding for community
wildlife research



Nunavut Wildlife Research Trust
ᓄᓇᓂᓪᓗ ᐅᐱᓪᓂᐅ ᓂᐅᐱᓪᓗᓂᐅ ᐱᓪᓗᓂᐅ



Inuit engagement

Evidence and arguments gathered during:

NWMB Public hearings and decision meetings

Government consultation meetings and workshop

Regional Wildlife Organization and HTO Annual Meetings

Other engagement activities





Community-Based Monitoring Network

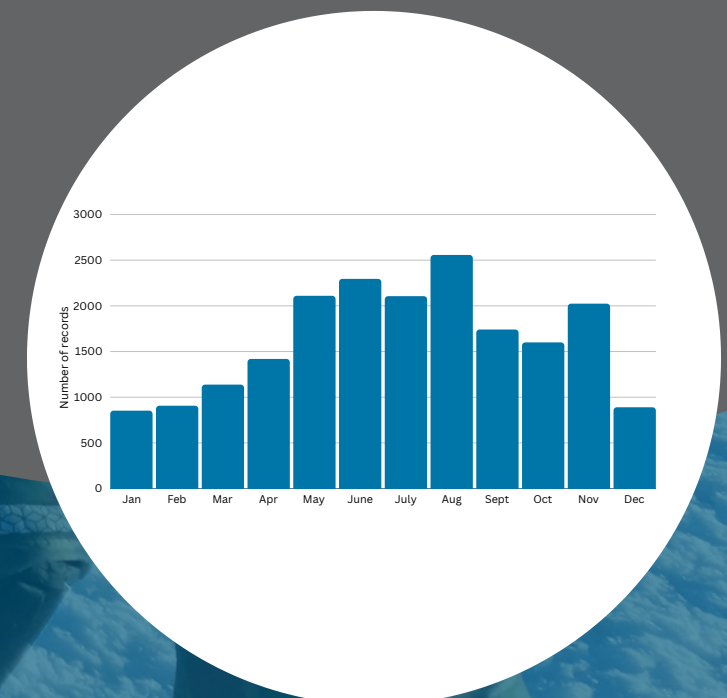
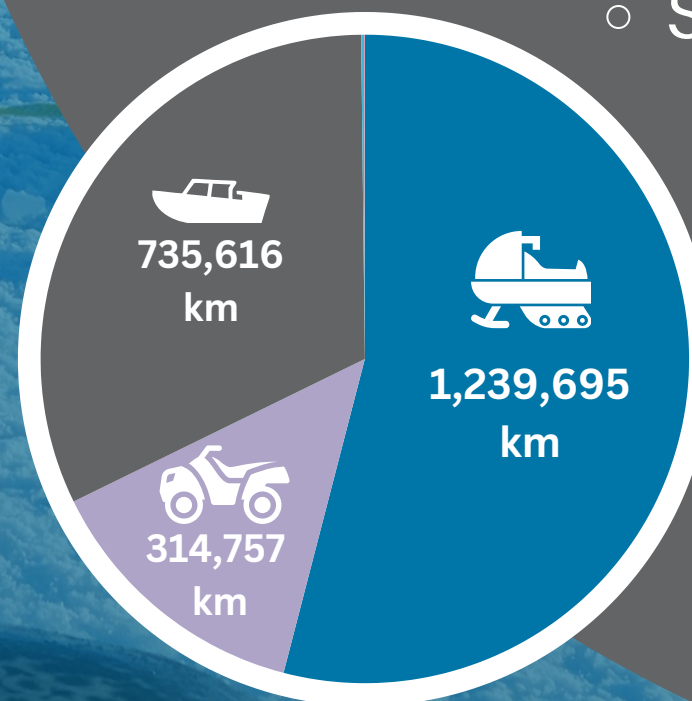
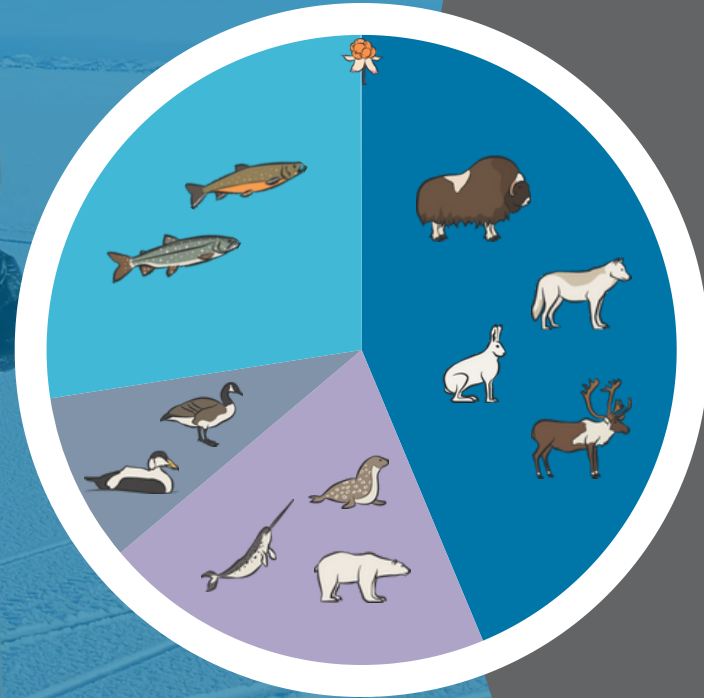
ወርሃዊ ስርዓት ለወርሃዊ ስርዓት ለወርሃዊ ስርዓት ለወርሃዊ ስርዓት

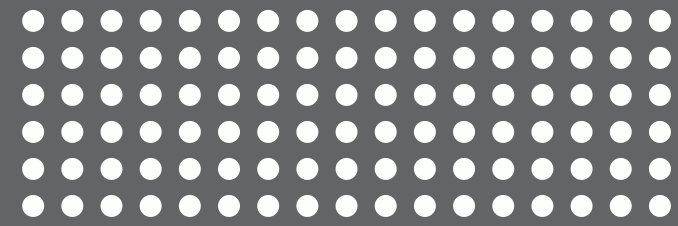
2012-2025



DATA IMPACT

- Quantifies on-the-land experiences & knowledge
- Empowered communities
 - Access to data
 - Reinforcement of community information that supports decision-making
 - Support Inuit harvesting and cultural practices





SMART SOLUTIONS

- Fully customized app
 - Data collection prompts
 - Inuktitut
 - Traditional place names
- Easy accessibility
 - Staff access to the database
 - Customized reports
 - App functional entirely offline

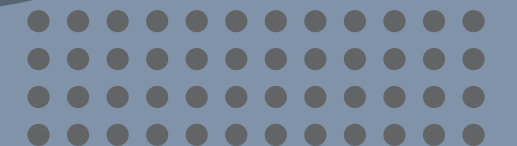
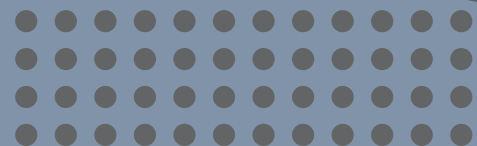
Program team



Community & Regional Liaison Officers



Harvesters



INCENTIVES



Gas payouts



Recognition
awards



Grand prize





10

Communities



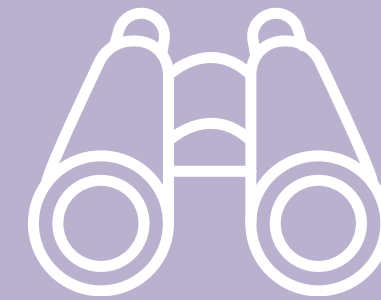
12

Years



250+

Participants



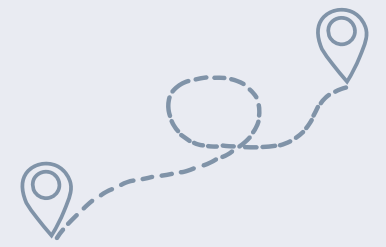
5,000+

Observations
recorded



10,800+

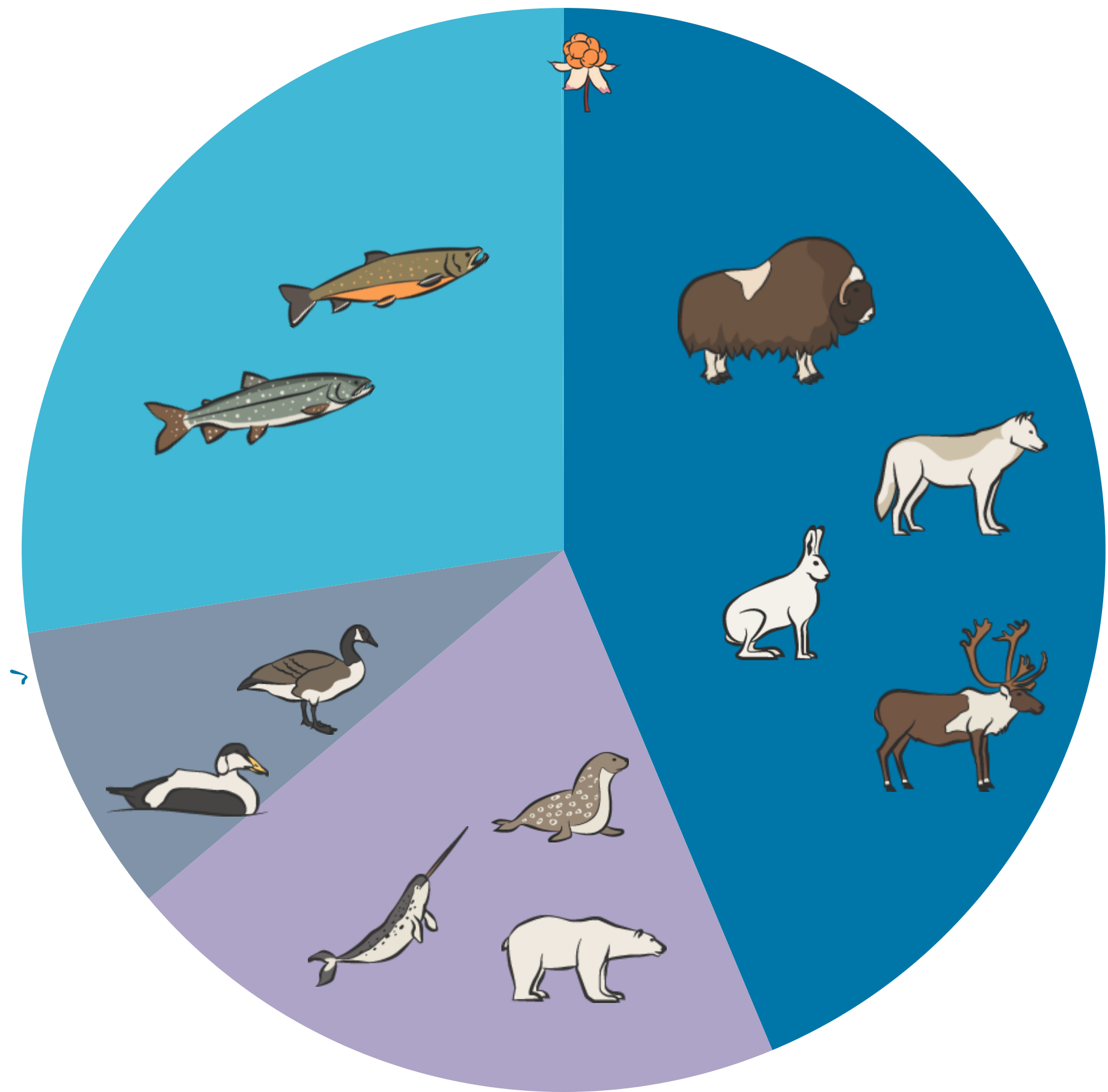
Harvests recorded



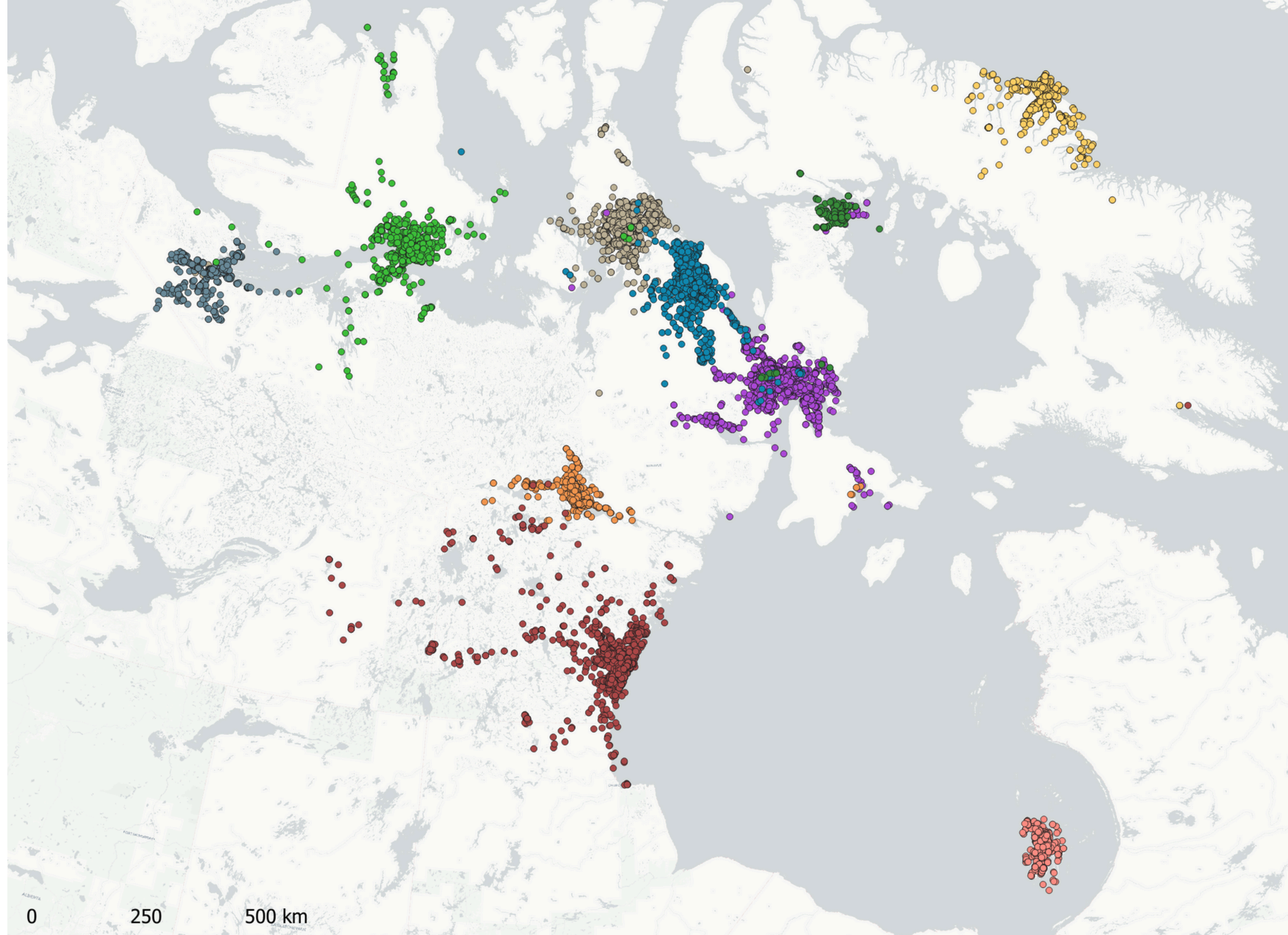
1,890,000+

Kilometers
traveled

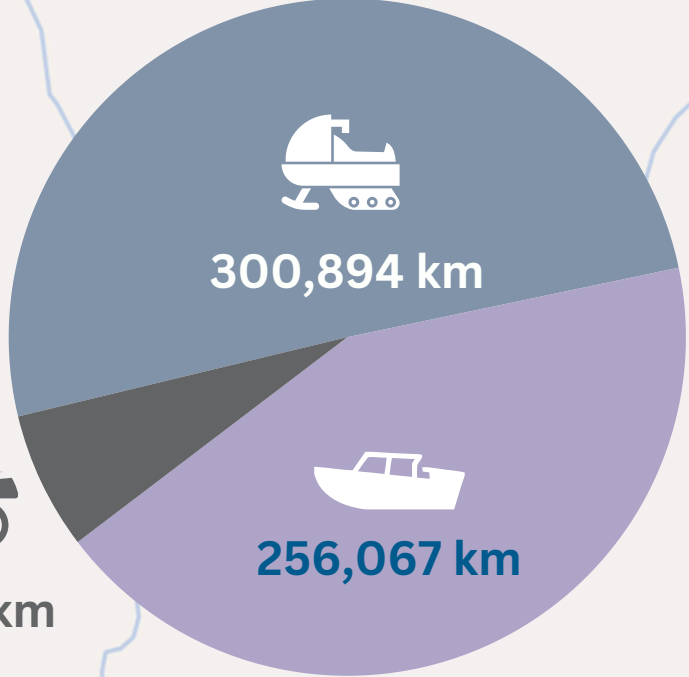
CBMN by the numbers



Harvests and observation records



Naujaat



Tracks

- ATV
- Skidoo
- Boat

Inuktitut translation

Naujaat

Understanding and curating the data

Monthly Screening

Interventions to ensure data is collected appropriately

Data Cleaning

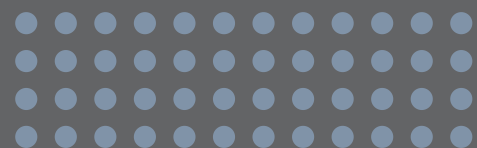
High level cleaning of data to correct errors

Data Verification

Annual community visits to confirm data with harvesters

Workshops

Gather community members to provide a deeper insight to the data



Challenges with the NWMB approach to knowledge co-production

Decision making tends to be is slow

Consensus is desired but can be difficult to achieve

Unequal opportunities for mobilization and use of scientific vs Indigenous knowledge

Adequate and meaningful engagement



